



NAUTICA ASSISTANCE
YACHT AGENTS & SUPPLIERS

SARDINIA
CORSICA
CARIBBEAN

SUGGESTED ANCHORAGES



NW COAST SARDINIA



SUGGESTED ANCHORAGES

NW COAST SARDINIA



NAUTICA ASSISTANCE
YACHT AGENTS & SUPPLIERS

SARDINIA
CORSICA
CARIBBEAN

ALGHERO AREA



NW COAST SARDINIA



GENERAL RESTRICTIONS

- Navigation within 200 m from the coast
- Anchoring within 200 m from the coast
- 10 knots speed limit within 1 km from the coast
- Running any craft within 200 m from the coast with engines on
- Tying lines to rocks





ALGHERO AREA

ALGHERO CITY

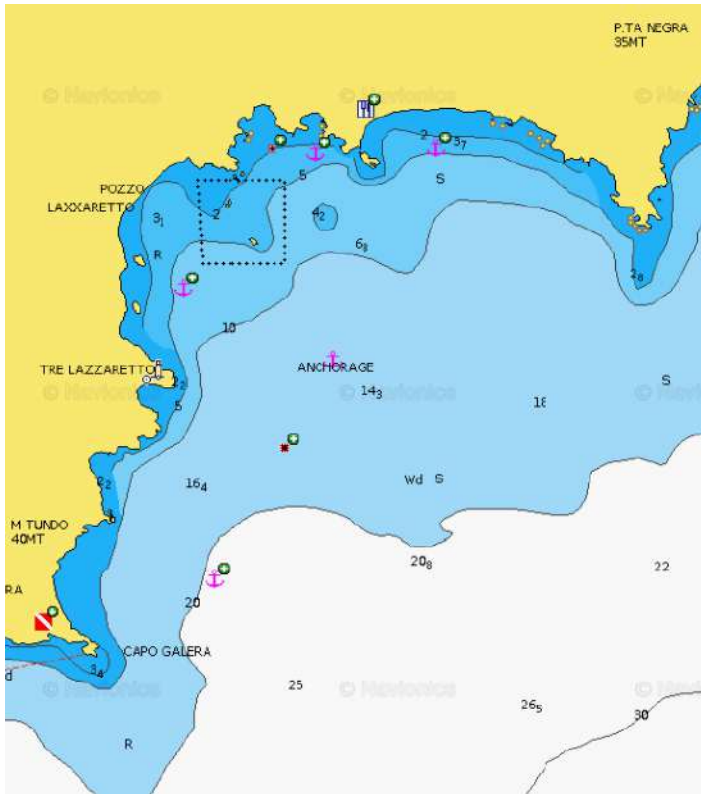
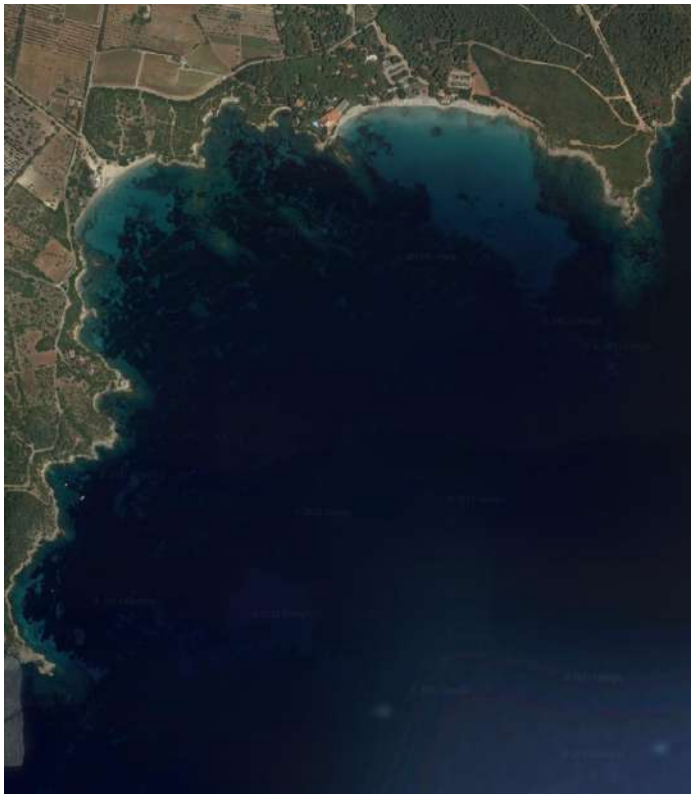
Anchor in Alghero's main bay, a passionate and exciting city, capital of the Riviera del Corallo, also known as the Sardinian Barceloneta, or "little Barcelona". Fully enjoy the city, its historic centre, its bars, its restaurants teeming with life and downtown lined with dozens of stores, the shopper's delight. Alghero is definitely famous for its coral and therefore you can find numerous craft shops offering jewellery for all budgets.

The indicated three anchorage points are the only ones allowed, Alfa and Bravo, the green ones will require approval from the authorities.

For any need you can always rely on Marina Sant'Elmo.



| | | | |
|-------------------------|-----------------------------|----------------------------|---------------------|
| ANCHORAGE NAME | ALGHERO AREA - ALGHERO CITY | SEABOTTOM | SANDY |
| COORDINATES | 40°34'12.2"N 8°18'20.7"E | FACILITIES TO LAND ASHORE | NO |
| HIGHLIGHTS | ALGHERO CITY CENTRE | FACILITIES ASHORE | ALGHERO CITY CENTRE |
| SHELTERED FROM | N - NE - E - SE WINDS | CLOSEST DROP-OFF POINT | MARINA SANT'ELMO |
| LIMITS AND PROHIBITIONS | ONLY GIVEN ANCHORAGE POINT | NEAREST COASTGUARD STATION | ALGHERO |





ALGHERO AREA

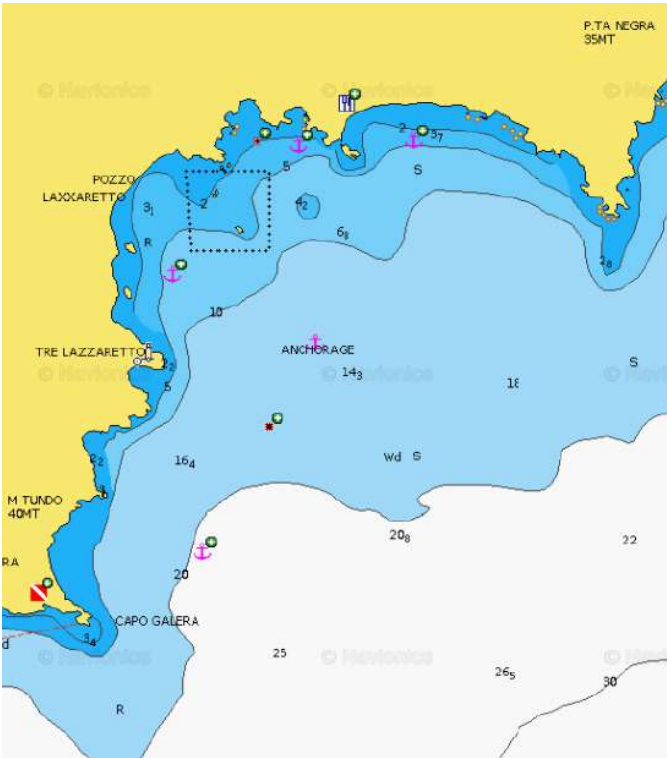
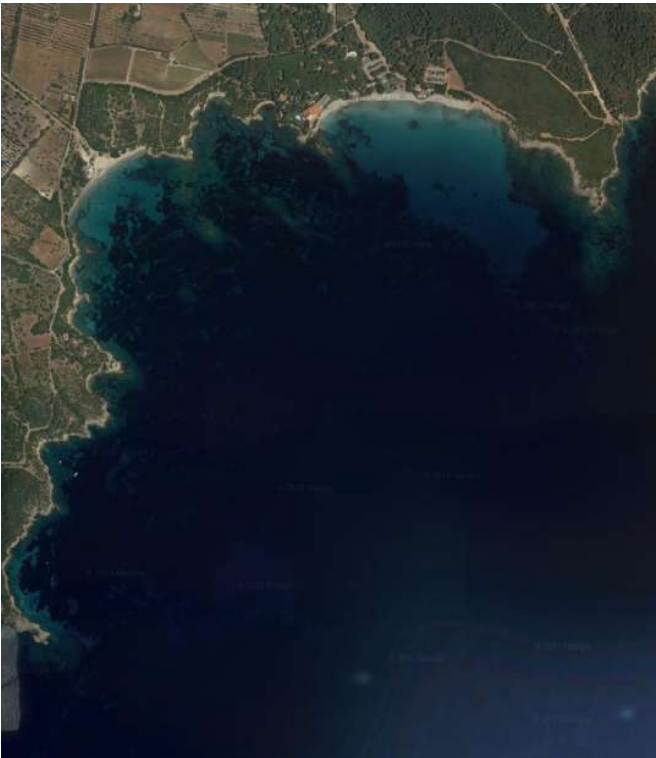
LAZZARETTO / LE BOMBARDE

Spanish tower Lazzaretto (XVII century) stands on the right and low rocky promontory overwhelmed by low cliffs, bordering, S, Lazzaretto cala. Anchor in 14 m off Lazzaretto and Le Bombarde beach, which are the most enchanting ones of the NW coast. They have fine white sand and surrounded by dark red volcanic rocks and Mediterranean maquis.

Le Bombarde Beach is a small bay between the rocks. Less than 1 km long, the beach is a few dozen metres wide. It slopes towards the water, which deepens just a few metres from shore. The water is almost always calm, crystal-clear, and always quite cold. There is a sandy bottom with numerous rocks emerging, especially at the two ends. Extremely popular among young people. Behind the beach there is a dense pine and eucalyptus woods.



| | | | |
|-------------------------|-------------------------------------|----------------------------|---|
| ANCHORAGE NAME | ALGHERO AREA - ALGHERO CITY | SEABOTTOM | SAND, ROCKS |
| COORDINATES | 40° 34' 53.57" N 8° 15' 32.44" E | FACILITIES TO LAND ASHORE | NO |
| HIGHLIGHTS | NATURAL BEAUTY | FACILITIES ASHORE | BEACH BAR |
| SHELTERED FROM | N - NW WIND | CLOSEST DROP-OFF POINT | - FERTILIA PORT - MARINA DI SANT'ELMO DOCK |
| LIMITS AND PROHIBITIONS | NO FURTHER RESTRICTIONS | NEAREST COASTGUARD STATION | ALGHERO |





ALGHERO AREA

PORTO CONTE BAY - CAPO CACCIA

MARINE PROTECTED AREA

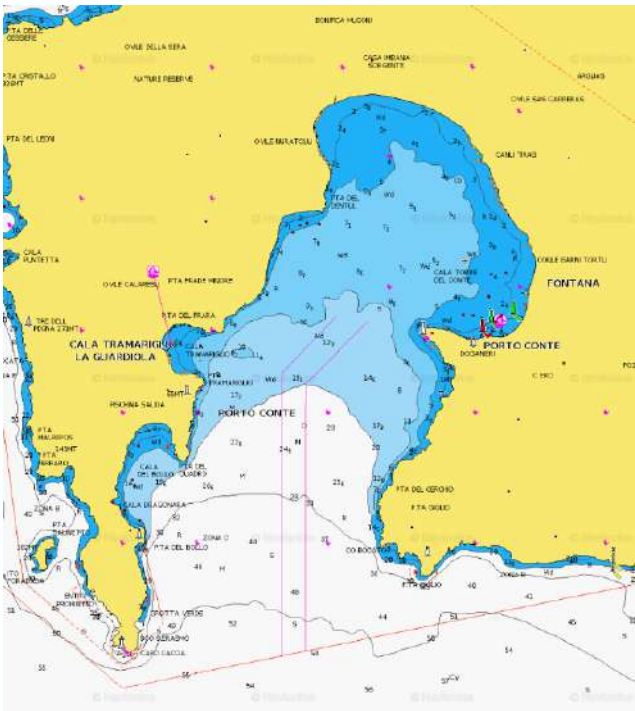
The anchorage is regulated by the Porto Conte Marine Park and a permit is issued by the Alghero Port Authority. Boats over 30mt and within 50mt can only anchor on Delta Point (40°35'00.0"N 8°11'20.0"E).

Capo Caccia is the S tip of a long, narrow and massive peninsula bordered by cliffs. It is characterised by its dark color and its 169 m high cliff, dominated by a lighthouse beacon wich is visible up to 34 NM, white tower on white house with two floors.

With Punta Giglio, it closes the gulf of Porto Conte. It is part of the AMP Capo Caccia / I. Piana. On the site of Capo Caccia, there is the famous Nereo Cave.



| | | | |
|-------------------------|--|----------------------------|-------------------------|
| ANCHORAGE NAME | - PORTO CONTE BAY - CAPO CACCIA | SEABOTTOM | SAND |
| COORDINATES | 40°35'00.0"N 8°11'20.0"E - DELTA POINT | FACILITIES TO LAND ASHORE | YES |
| HIGHLIGHTS | NATURAL BEAUTY | FACILITIES ASHORE | BEACH BARS NOT HIGH END |
| SHELTERED FROM | NW - N - NE - E - SE WINDS | CLOSEST DROP-OFF POINT | TRAMARIGLIO DOCK |
| LIMITS AND PROHIBITIONS | MARINE PROTECTED AREA - BOATS OVER 30MT CAN ANCHOR ONLY ON DELTA POINT | NEAREST COASTGUARD STATION | ALGHERO |





ALGHERO AREA

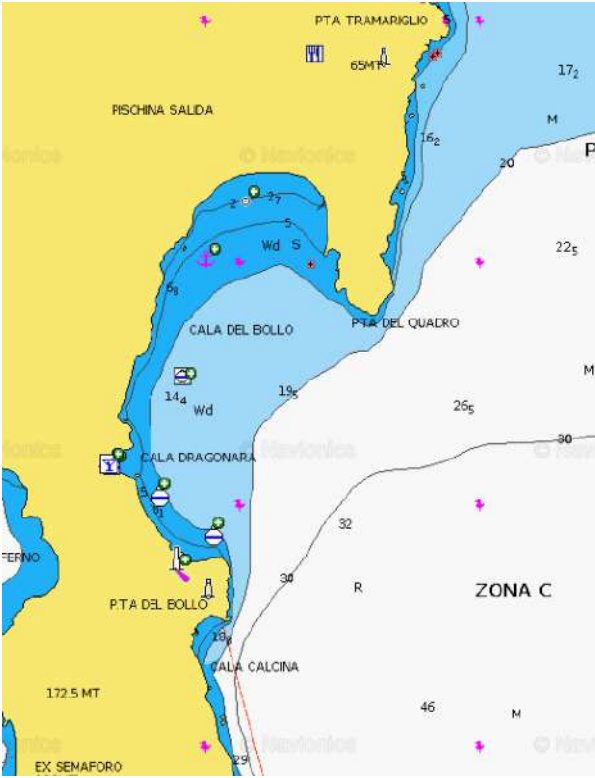
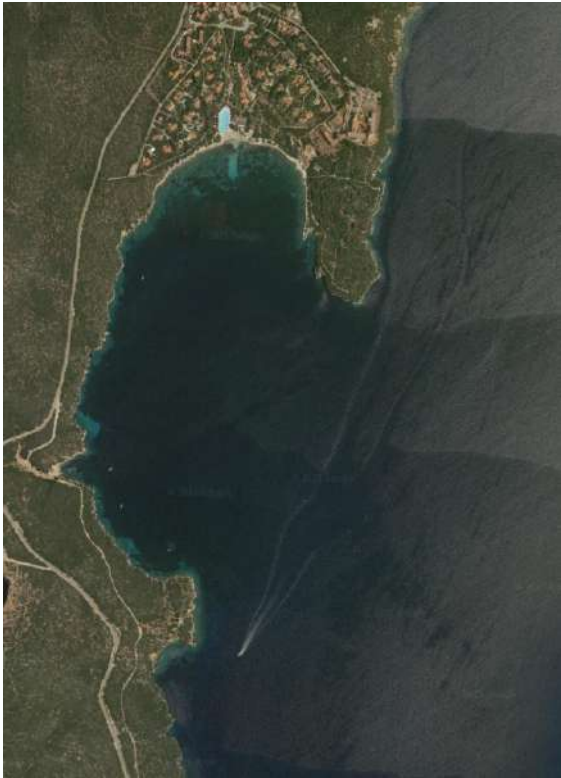
CALA DRAGUNARA - CAPO CACCIA

MARINE PROTECTED AREA

A small and beautiful beach with white sandy bottom and a small concrete dock on South west end of the bay where tour boats for Nettuno caves depart. Anchorage between 6 and 14 m protected from prevalent winds.



| | | | |
|-------------------------|------------------------------|----------------------------|-----------------------|
| ANCHORAGE NAME | CALA DRAGUNARA - CAPO CACCIA | SEABOTTOM | ROCKS |
| COORDINATES | 40°34.56 N 8°09.69 E | FACILITIES TO LAND ASHORE | NO |
| HIGHLIGHTS | NATURAL BEAUTY | FACILITIES ASHORE | BEACH BAR, FACILITIES |
| SHELTERED FROM | W - NW - N WINDS | CLOSEST DROP-OFF POINT | CALA DRAGUNARA |
| LIMITS AND PROHIBITIONS | SEE CAPOCACCIA ZONING MAP | NEAREST COASTGUARD STATION | PORTO CONTE |





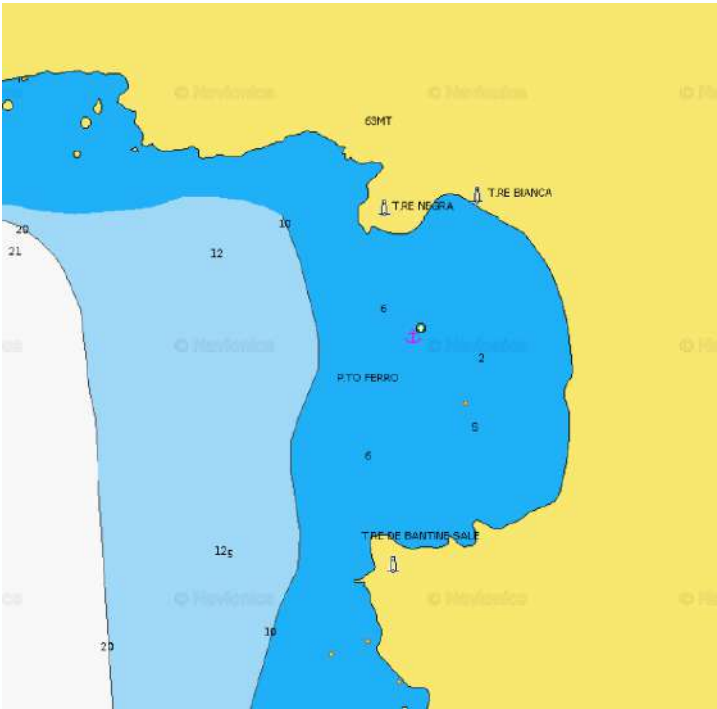
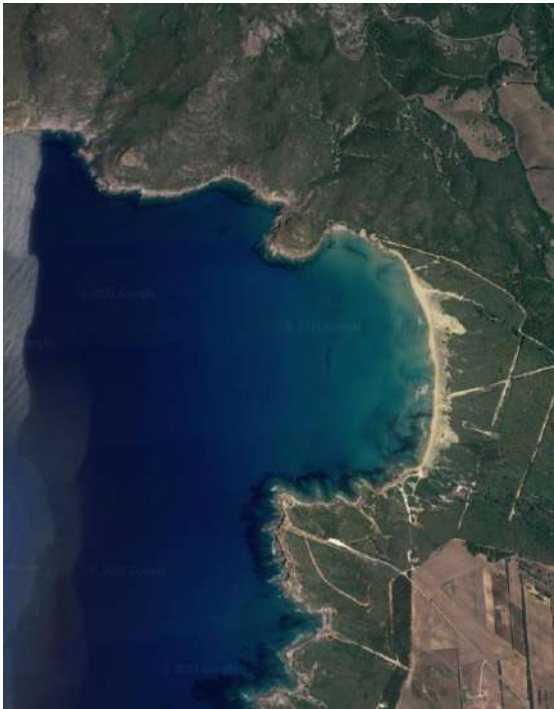
ALGHERO AREA

PORTO FERRO

Porto Ferru (or Porto Ferro) is a deep inlet facing West with two towers on the extreme points. The sandy beach stretches about 2 km. You can anchor in between the two towers on a 6 m sandy bottom. This cove is popular with surfers and windsurfers, due to the fact that the shallow bottom creates often big waves.



| | | | |
|---|------------------------------|--|--|
|  ANCHORAGE NAME | PORTO FERRO |  SEABOTTOM | SAND |
|  COORDINATES | 40°41'00.6" N 8°11'57.9"E |  FACILITIES TO LAND ASHORE | NO |
|  HIGHLIGHTS | NATURAL BEAUTY |  FACILITIES ASHORE | BEACH BAR |
|  SHELTERED FROM | N - NE - E - SE - S WINDS |  CLOSEST DROP-OFF POINT | - ALGHERO PORT - MARINA DI SANT'ELMO DOCK |
|  LIMITS AND PROHIBITIONS | NO FURTHER RESTRICTIONS |  NEAREST COASTGUARD STATION | ALGHERO |





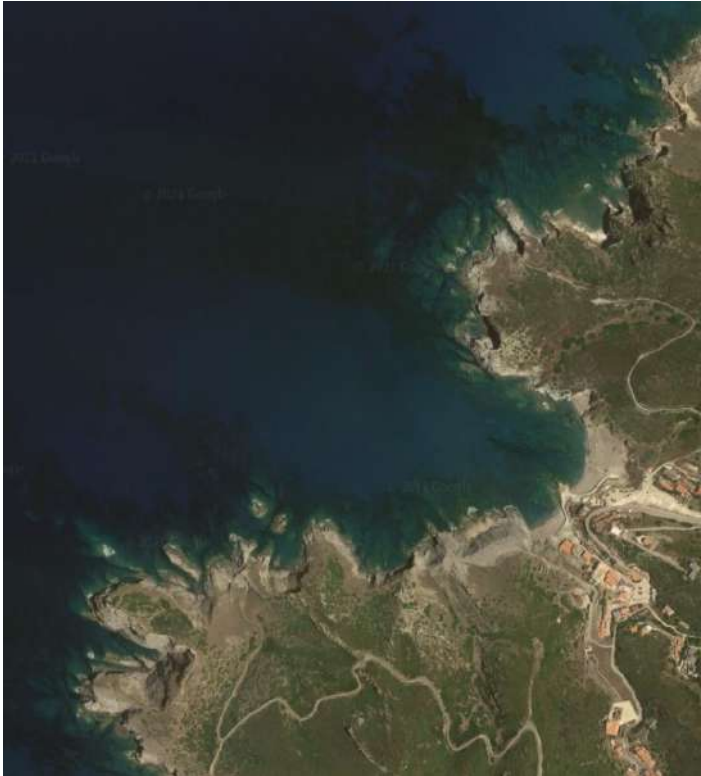
ALGHERO AREA

L'ARGENTIERA

San Nicolò bay in Argentiera is a small cove 1 mile North along the coast from Argentiera's cape. You can see an isolated church on a hill and facilities for the old mine. Well protected from E, SE, NE winds. You can anchor in the middle of the cove on 10 to 12 m water.



| | | | |
|---|------------------------------|--|--|
|  ANCHORAGE NAME | L'ARGENTIERA |  SEABOTTOM | SAND, ROCKS |
|  COORDINATES | 40°44'26.5" N 8°08'40.1"E |  FACILITIES TO LAND ASHORE | NO |
|  HIGHLIGHTS | NATURAL BEAUTY |  FACILITIES ASHORE | BEACH BAR, FACILITIES |
|  SHELTERED FROM | NE - E - SE WINDS |  CLOSEST DROP-OFF POINT | - ALGHERO PORT - MARINA DI SANT'ELMO DOCK |
|  LIMITS AND PROHIBITIONS | NO FURTHER RESTRICTIONS |  NEAREST COASTGUARD STATION | ALGHERO |





NAUTICA ASSISTANCE
YACHT AGENTS & SUPPLIERS

SARDINIA
CORSICA
CARIBBEAN

STINTINO AREA



NW COAST SARDINIA



GENERAL RESTRICTIONS

- Navigation within 200 m from the coast
- Anchoring within 200 m from the coast
- 10 knots speed limit within 1 km from the coast
- Running any craft within 200 m from the coast with engines on
- Tying lines to rocks





STINTINO AREA

LA PELOSA AND RADA DEI FORNELLI

This stunning anchorage, with unbelievably clear water, gives protection from the prevalent winds, but the south side is too shallow for big yachts. The best area to anchor is South East of Isola Piana where there is enough space for the anchor chain swing and depth is minimum 5 mts. Following the coast on the West La Pelosa beach opens up with breathtaking white sand and crystal clear water, overlooking the famous Pelosa and Falcone Towers. La Pelosa beach is one of the most famous in Sardinia.

Up North stands Asinara island: an ex penitentiary and now park, that has become the destination of numerous tourists. Please check Asinara Park rules and regulation.



ANCHORAGE NAME

LA PELOSA AND FORNELLI
ANCHORAGE



SEABOTTOM

SAND AND ROCKS



COORDINATES

40°58'24.0"N
8°13'30.4"E



FACILITIES TO LAND ASHORE

YES, CASTELSARDO MARINA



HIGHLIGHTS

LA PELOSA BEACH &
ASINARA NATURAL PARK



FACILITIES ASHORE

NO FACILITIES ON THE SHORE



SHELTERED FROM

S - W - N WINDS



CLOSEST DROP-OFF POINT

CASTELSARDO MARINA



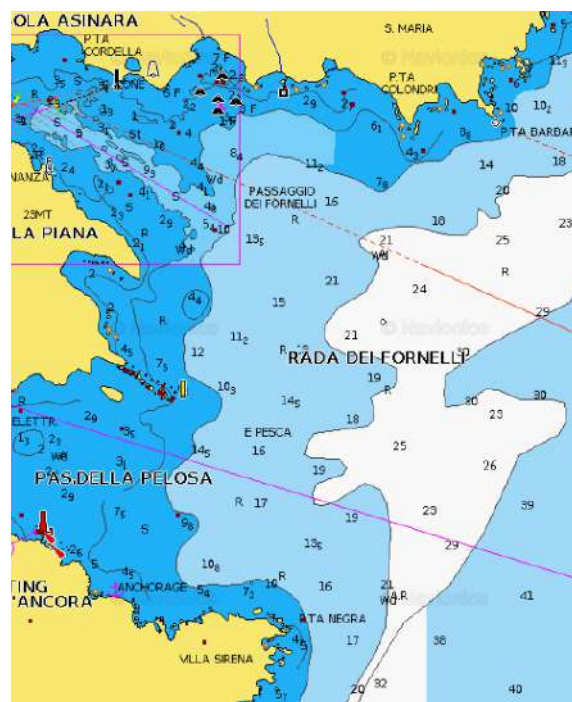
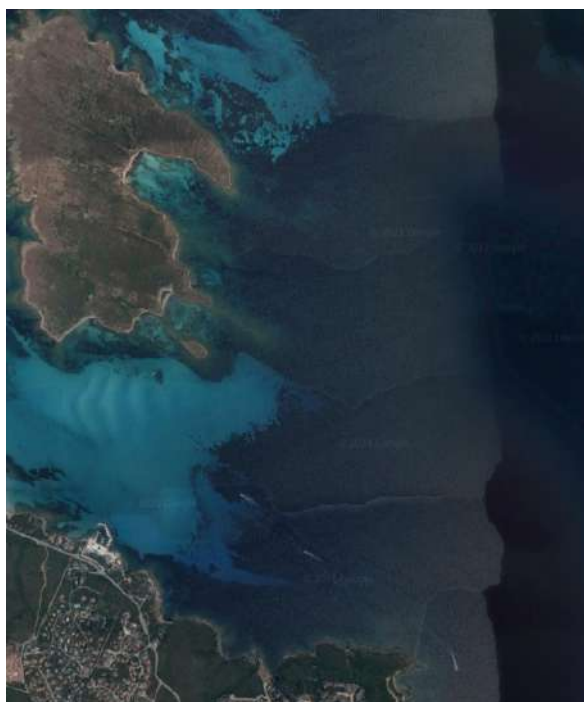
LIMITS AND PROHIBITIONS

NO FURTHER RESTRICTIONS



NEAREST COASTGUARD STATION

CASTELSARDO





NAUTICA ASSISTANCE
YACHT AGENTS & SUPPLIERS

SARDINIA
CORSICA
CARIBBEAN

CASTELSARDO AREA



NW COAST SARDINIA



GENERAL RESTRICTIONS

- Navigation within 200 m from the coast
- Anchoring within 200 m from the coast
- 10 knots speed limit within 1 km from the coast
- Running any craft within 200 m from the coast with engines on
- Tying lines to rocks





CASTELSARDO AREA

CASTELSARDO

Situated in the heart of the Gulf of Asinara, Castelsardo is a place of natural beauty, tourism, traditions, and wonderful works of art. This medieval town is a charming place to spend an amazing day between the sea, archaeology and nature. Enjoy the rare sandy beaches and inlets such as Baia Ostina, East of town, and Punta Tramontana to the West and La Marinedda in the vicinity.



| | | | | | |
|--|-------------------------|-------------------------------|--|----------------------------|---|
| | ANCHORAGE NAME | CASTELSARDO | | SEABOTTOM | SAND |
| | COORDINATES | 40°54'51.65"N 8°41'47.00"E | | FACILITIES TO LAND ASHORE | YES, ANCORA HOTEL YACHT CLUB |
| | HIGHLIGHTS | CASTELSARDO CITY CASTLE | | FACILITIES ASHORE | NO FACILITIES ON THE SHORE |
| | SHELTERED FROM | E - SE - S - SW WINDS | | CLOSEST DROP-OFF POINT | STINTINO HOTEL L'ANCORA DOCK OR STINTINO PORT |
| | LIMITS AND PROHIBITIONS | NO FURTHER RESTRICTIONS | | NEAREST COASTGUARD STATION | STINTINO |



NAUTICA ASSISTANCE
YACHT AGENTS & SUPPLIERS

SARDINIA
CORSICA
CARIBBEAN

ISOLA ROSSA AREA NW COAST SARDINIA



GENERAL RESTRICTIONS

- Navigation within 200 m from the coast
- Anchoring within 200 m from the coast
- 10 knots speed limit within 1 km from the coast
- Running any craft within 200 m from the coast with engines on
- Tying lines to rocks





ISOLA ROSSA AREA

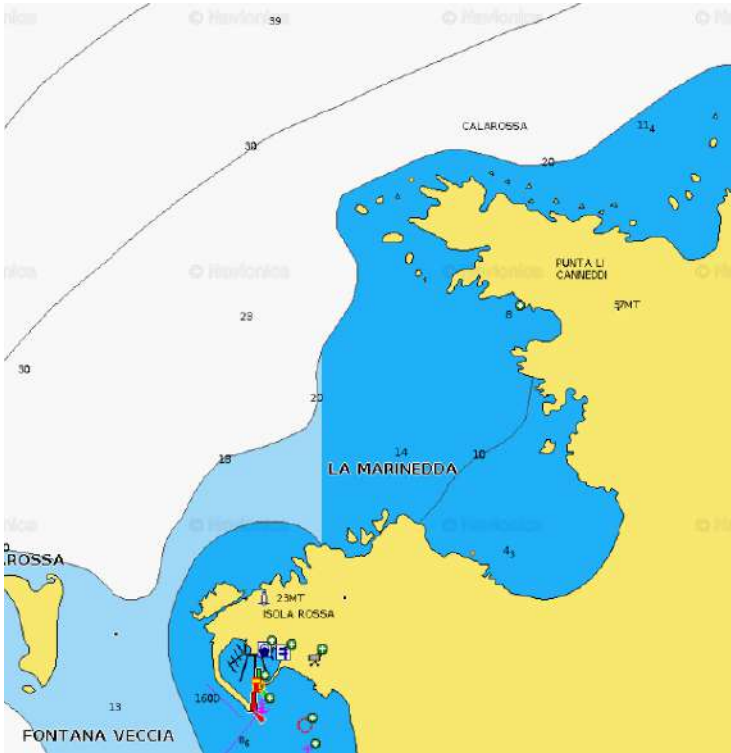
LA MARINEDDA BAY

Lovely wide bay with incredibly clear water located on the NE of Isola Rossa village. The bottom is sandy and holding for chain is good.

The fabulous beach of Marinedda is the ideal place for those who loves quiet strolls and wants to explore the charming red rock coves on the two sides of the beach, framing transparent waters such as only Sardinia can offer, and backed by unspoilt, perfumed natural vegetation.



| | | | |
|--|------------------------------------|--|--|
|  ANCHORAGE NAME | LA MARINEDDA BAY |  SEABOTTOM | SAND AND ROCKS |
|  COORDINATES | 41° 1' 1.898" N 8° 53' 6.374" E |  FACILITIES TO LAND ASHORE | NO |
|  HIGHLIGHTS | NATURAL BEAUTY |  FACILITIES ASHORE | LA MARINEDDA BEACH WITH BEACH BAR AND RESTAURANT |
|  SHELTERED FROM | S - SE - E - NE WINDS |  CLOSEST DROP-OFF POINT | ISOLA ROSSA TOURISTIC PORT |
|  LIMITS AND PROHIBITIONS | NO FURTHER RESTRICTIONS |  NEAREST COASTGUARD STATION | CASTELSARDO |





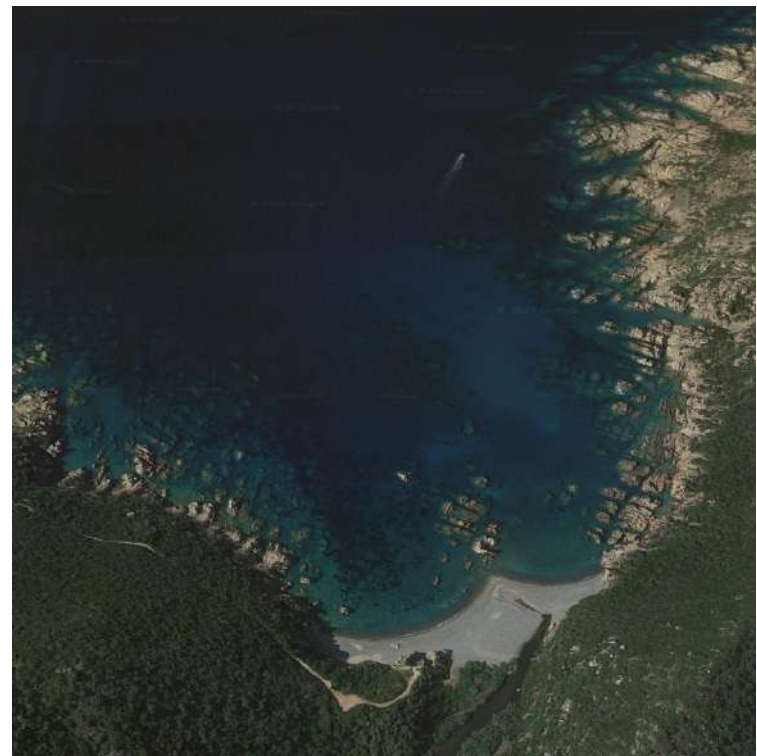
ISOLA ROSSA AREA

CALA TINNARI

Stunning cove locate along the coast about 3, 5 NM from Isola Rossa. In early summer some fresh water from a river is probably flowing into the sea through a rocky bed. All the surrounding area is very wild, nice to make some land excursion.



| | | | |
|-------------------------|-------------------------------------|----------------------------|----------------------------|
| ANCHORAGE NAME | CALA TINNARI | SEABOTTOM | ROCKS |
| COORDIINATES | 41° 2' 11.875" N 8° 55' 5.171" E | FACILITIES TO LAND ASHORE | NO |
| HIGHLIGHTS | NATURAL BEAUTY | FACILITIES ASHORE | NONE |
| SHELTERED FROM | SW - W - SE - E WINDS | CLOSEST DROP-OFF POINT | ISOLA ROSSA TOURISTIC PORT |
| LIMITS AND PROHIBITIONS | NO FURTHER RESTRICTIONS | NEAREST COASTGUARD STATION | CASTELSARDO |





NAUTICA ASSISTANCE
YACHT AGENTS & SUPPLIERS

SARDINIA
CORSICA
CARIBBEAN



NA AGENCY

+39 0789 57607 - info@nayacht.com

WWW.NAYACHT.COM



NAUTICA ASSISTANCE
YACHT AGENTS & SUPPLIERS

SARDINIA
CORSICA
CARIBBEAN