



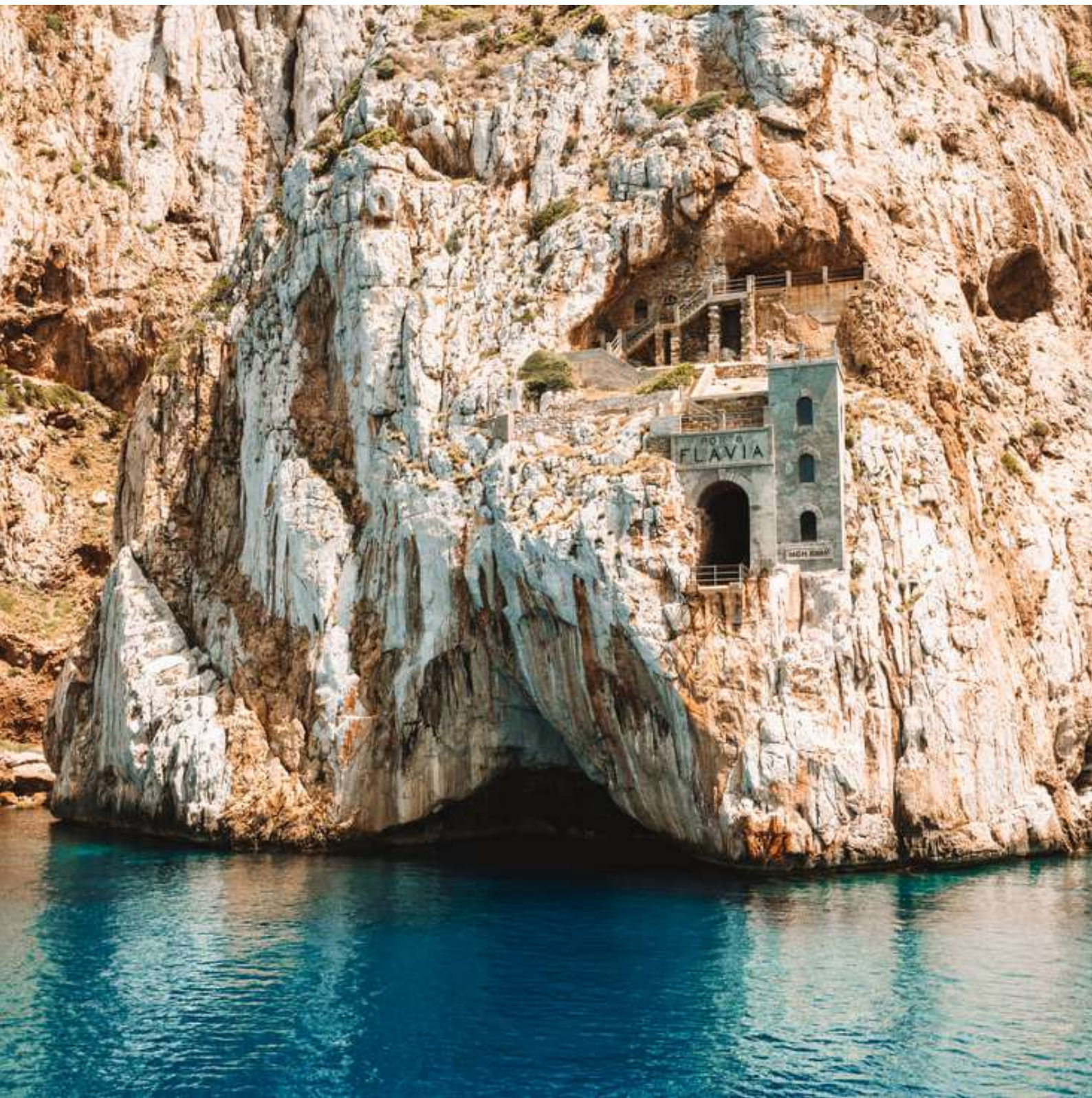
**NAUTICA ASSISTANCE**  
YACHT AGENTS & SUPPLIERS

SARDINIA  
CORSICA  
CARIBBEAN

SUGGESTED ANCHORAGES



SW COAST SARDINIA



SUGGESTED ANCHORAGES

SW COAST SARDINIA





**NAUTICA ASSISTANCE**  
YACHT AGENTS & SUPPLIERS

SARDINIA  
CORSICA  
CARIBBEAN

## SANT'ANTIOCO AREA



### GENERAL RESTRICTIONS

- Navigation within 200 m from the coast
- Anchoring within 200 m from the coast
- 10 knots speed limit within 1 km from the coast
- Running any craft within 200 m from the coast with engines on
- Tying lines to rocks







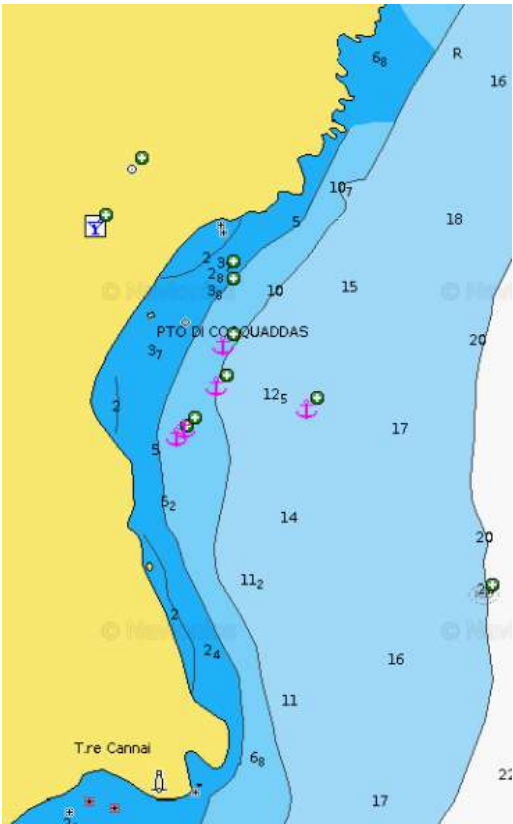
# SANT'ANTIOCO AREA

## COEQUADDUS BAY

Coequaddus is a bay located SE of Sant Antioco ISLAND, in the Palmas gulf. It is sheltered from W and NW winds. Anchorage at legal distance can be at 5mts depth, E of the beach.



ANCHORAGE NAME	COEQUADDUS	SEABOTTOM	SAND
COORDINATES	38°58'50.5"N 8°26'42.5"E	FACILITIES TO LAND ASHORE	YES, WOODEN DOCK
HIGHLIGHTS	NATURAL BEAUTY	FACILITIES ASHORE	NONE
SHELTERED FROM	W - NW WINDS	CLOSEST DROP-OFF POINT	COEQUADDUS PETROL STATION DOCK
LIMITS AND PROHIBITIONS	NO FURTHER RESTRICTIONS	NEAREST COASTGUARD STATION	SANT'ANTIOCO







**NAUTICA ASSISTANCE**  
YACHT AGENTS & SUPPLIERS

SARDINIA  
CORSICA  
CARIBBEAN

## SAN PIETRO ISLAND AREA



SW COAST SARDINIA



### GENERAL RESTRICTIONS

- Navigation within 200 m from the coast
- Anchoring within 200 m from the coast
- 10 knots speed limit within 1 km from the coast
- Running any craft within 200 m from the coast with engines on
- Tying lines to rocks







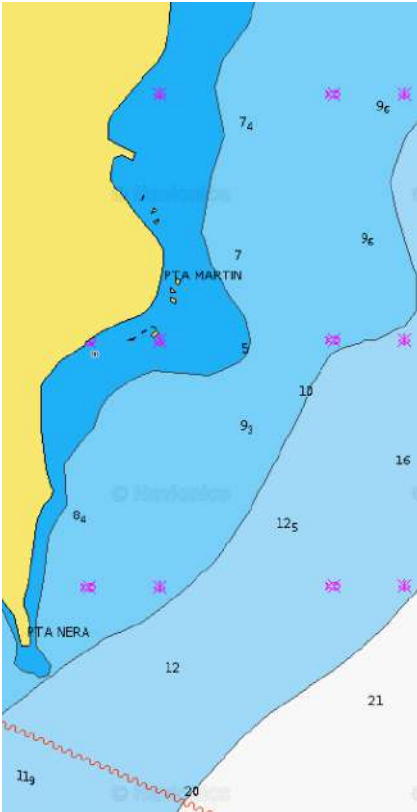
# SAN PIETRO ISLAND AREA

## CALA PUNTA NERA

This small cove is called Punta Nera. Located in the SE side of the island of San Pietro. It is divided into two parts by a strip of dark rocks. Anchorage sheltered from W-NW winds, anchorage in 6- 8 mts water. On the beach, a kiosk offers refreshment and shade during the summer season.



 ANCHORAGE NAME	CALA PUNTA NERA	 SEABOTTOM	SAND
 COORDINATES	39° 6'26.26"N 8°18'30.07"E	 FACILITIES TO LAND ASHORE	YES
 HIGHLIGHTS	NATURAL BEAUTY	 FACILITIES ASHORE	BEACH BAR
 SHELTERED FROM	W - NW WINDS	 CLOSEST DROP-OFF POINT	PUNTA NERA DOCK
 LIMITS AND PROHIBITIONS	NO FURTHER RESTRICTIONS	 NEAREST COASTGUARD STATION	CARLOFORTE



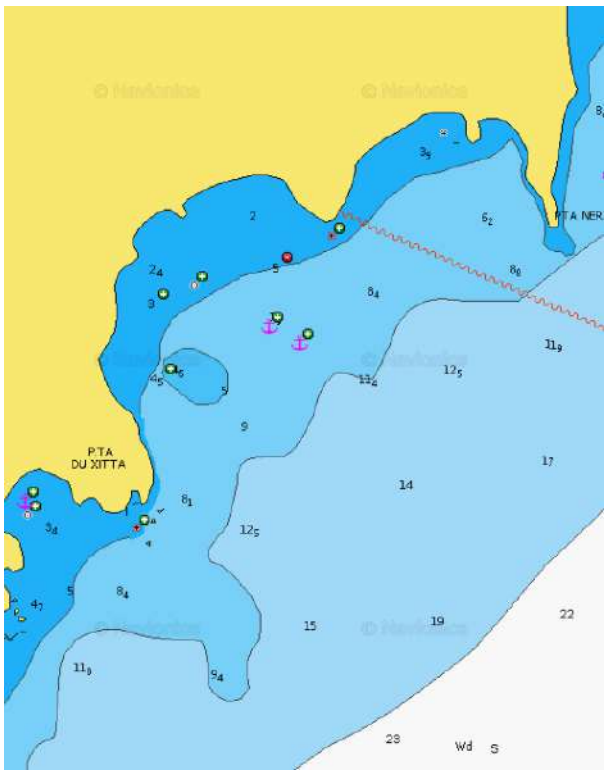
# SAN PIETRO ISLAND AREA

## CALA DI GUIDI

Good anchorage, nice family beach (little sand but rocks to land on) Sand without posidonia with depth 6-8m. The Port Authority runs every day, so watch out for the distances from the coast. Care must be taken not to anchor beyond the strip of red buoys. Disembarking on the attached beach is prohibited and very controlled.



 ANCHORAGE NAME	CALA DI GUIDI	 SEABOTTOM	SAND
 COORDINATES	39° 5'56.36"N 8°18'0.07"E	 FACILITIES TO LAND ASHORE	NO
 HIGHLIGHTS	NATURAL BEAUTY	 FACILITIES ASHORE	NONE
 SHELTERED FROM	W - NW - N - NE WINDS	 CLOSEST DROP-OFF POINT	CALA DI GUIDI
 LIMITS AND PROHIBITIONS	NO FURTHER RESTRICTIONS	 NEAREST COASTGUARD STATION	CARLOFORTE







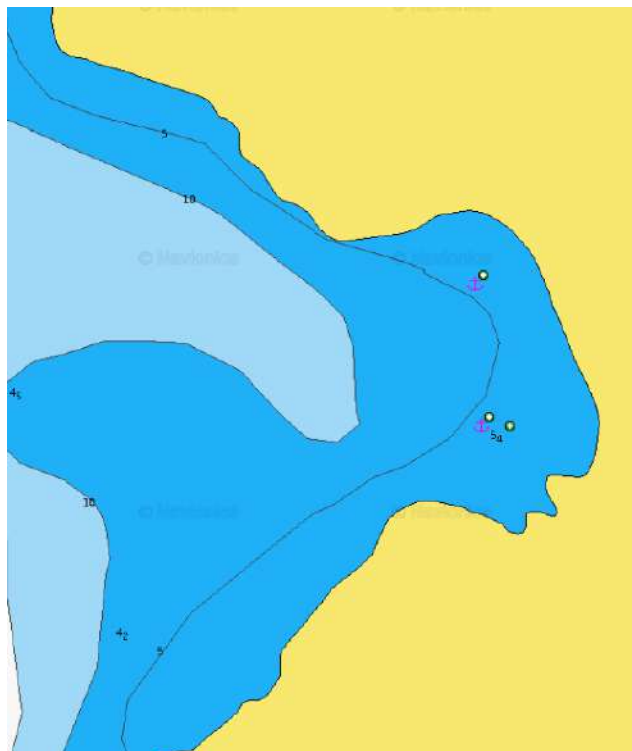
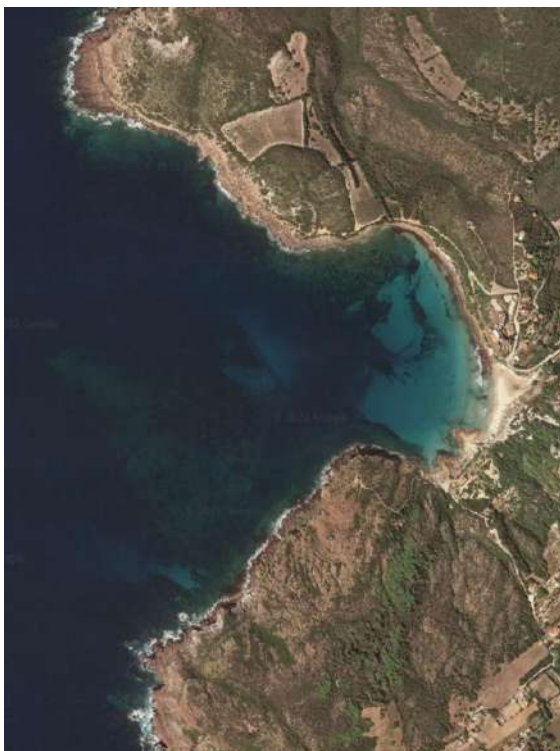
# SAN PIETRO ISLAND AREA

## LA CALETTA

This bay sits on the deepest part of a big bay on the west side of San Pietro island. The bay goes from Punta dei Cannoni (North) to Punta Spalantore (South). Approaching La Caletta bay you will have to stay away from Punta del Castello on the South, and anchor in between 3 to 10 mts of water just in front of the beach of La Caletta bay. Beautiful cove with protection from East winds. Sandy bottom but watch out for patches of rock and algae especially on the right of the bay.



 ANCHORAGE NAME	LA CALETTA BAY	 SEABOTTOM	SAND
 COORDINATES	39° 7'1.99"N 8°15'10.45"E	 FACILITIES TO LAND ASHORE	YES
 HIGHLIGHTS	NATURAL BEAUTY	 FACILITIES ASHORE	BEACH BAR, FACILITIES
 SHELTERED FROM	NE - E - SE WINDS	 CLOSEST DROP-OFF POINT	LA CALETTA BEACH DOCK
 LIMITS AND PROHIBITIONS	NO FURTHER RESTRICTIONS	 NEAREST COASTGUARD STATION	CARLOFORTE







**NAUTICA ASSISTANCE**  
YACHT AGENTS & SUPPLIERS

SARDINIA  
CORSICA  
CARIBBEAN

## BUGGERRU AREA



### GENERAL RESTRICTIONS

- Navigation within 200 m from the coast
- Anchoring within 200 m from the coast
- 10 knots speed limit within 1 km from the coast
- Running any craft within 200 m from the coast with engines on
- Tying lines to rocks







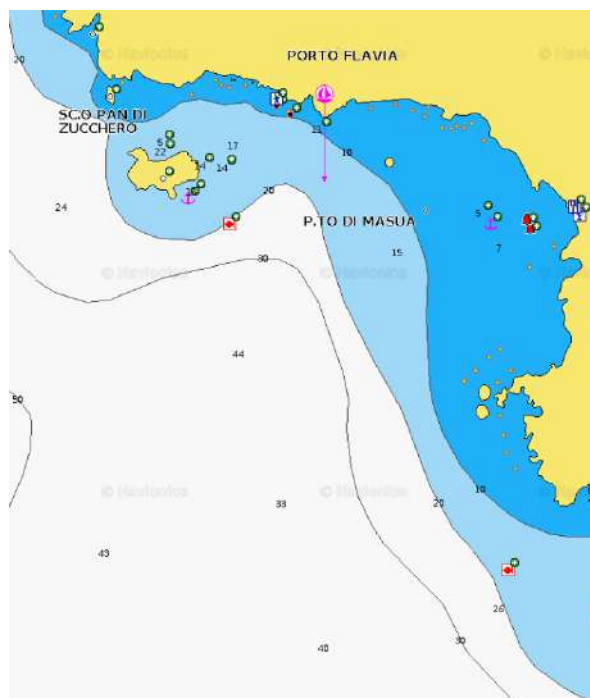
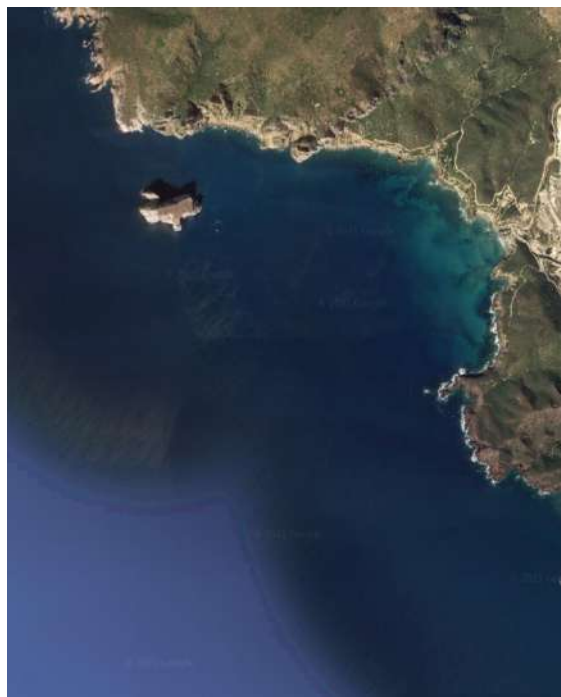
# BUGGERU AREA

## MASUA

The big bay of port of Masua is a beautiful from where you can admire the old mine site Unesco heritage of Porto Flavia. You can anchor in 9 m, close to the loading facility or moor to the numerous mooring buoys in the proximity. It is sheltered from N wind. Minerals came to Porto Flavia from Masua. Long galleries allowed to carry in the rocky walls and ended directly in the holds of merchant ships moored under the rock wall. Porto Flavia was used for the shipping of minerals. Mining ceased permanently in 1991, however, the installation will remain active until the end of 1997. Porto Flavia is an ingenious structure that has revolutionized the system of boarding minerals. A receiving conveyor receiving minerals from underground deposits to transfer, with its ingenious movable arm, directly into the hold of the transport ships at anchor, on buoys by 9 m deep.



 ANCHORAGE NAME	MASUA	 SEABOTTOM	SAND AND ROCKS
 COORDINATES	39° 19' 56" N 8° 24' 58" E	 FACILITIES TO LAND ASHORE	YES
 HIGHLIGHTS	NATURAL BEAUTY, PORTO FLAVIA MILITARY-ARCHEOLOGICAL SITE	 FACILITIES ASHORE	BEACH BAR, FACILITIES
 SHELTERED FROM	N - NE - E - SE WINDS	 CLOSEST DROP-OFF POINT	MASUA BEACH
 LIMITS AND PROHIBITIONS	NO FURTHER RESTRICTIONS	 NEAREST COASTGUARD STATION	PORTOSCUSO







# BUGGERRU AREA

## CALA DOMESTICA

Impressive anchorage between the cliffs and turquoise water. Very good protection (except North) excellent holding in 6 to 3 meters of sand. Behind Rama tip is a small deep bay ending with a sandy beach. It is very picturesque and protected from S winds, but dangerously exposed to the Mistral.



ANCHORAGE NAME

CALA DOMESTICA



SEABOTTOM

SAND AND ROCKS



COORDINATES

39° 22' 30" N  
8° 22' 42" E



FACILITIES TO LAND ASHORE

YES



HIGHLIGHTS

NATURAL BEAUTY



FACILITIES ASHORE

NONE



SHELTERED FROM

W - SW - S - SE - E - NE WINDS



CLOSEST DROP-OFF POINT

BUGGERRU PORT



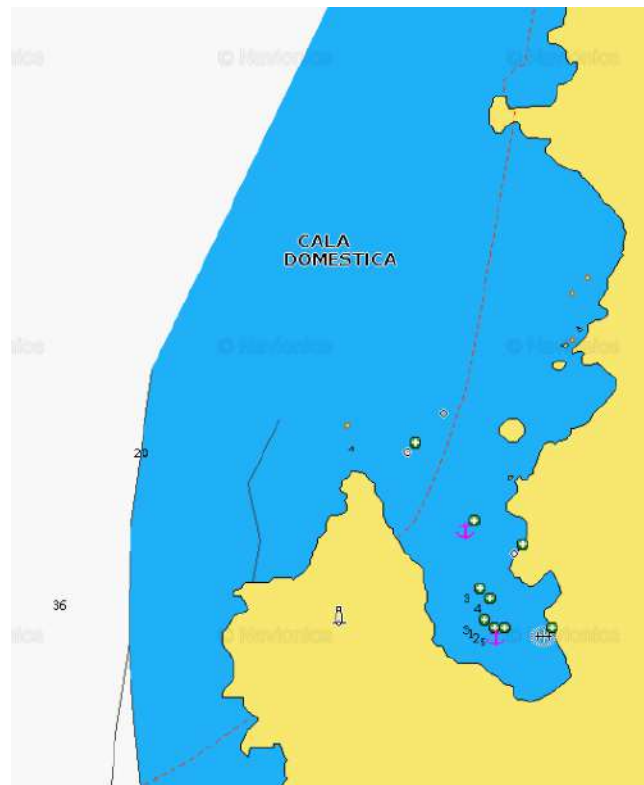
LIMITS AND PROHIBITIONS

NO FURTHER RESTRICTIONS



NEAREST COASTGUARD STATION

PORTOSCUSO



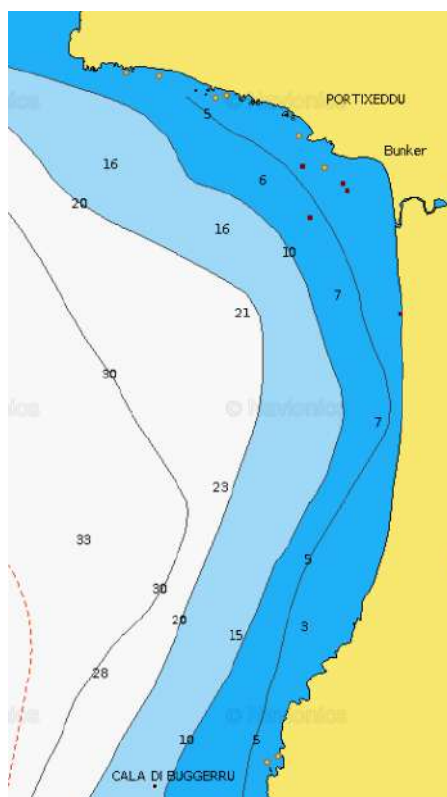
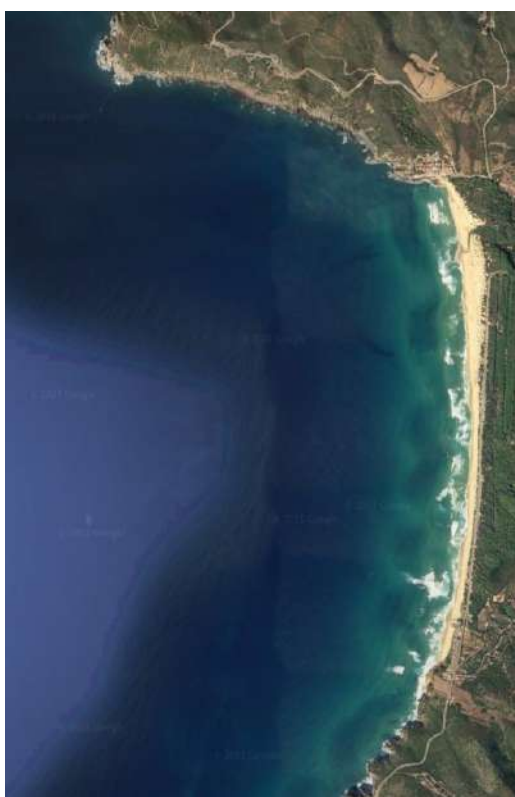




# BUGGERU AREA

## PORTIXEDDU

With good weather, you can anchor in 6 m water, in front of Portixeddu and San Nicolo of Bugerru beaches, which are separated from Mannu river.

**ANCHORAGE NAME****PORTIXEDDU****SEABOTTOM****SAND****COORDINATES****39° 26' 23" N  
8° 24' 30" E****FACILITIES TO LAND ASHORE****YES****HIGHLIGHTS****NATURAL BEAUTY****FACILITIES ASHORE****BEACH BAR, RESTAURANT****SHELTERED FROM****N - NE - E - SE WINDS****CLOSEST DROP-OFF POINT****BUGGERRU PORT****LIMITS AND PROHIBITIONS** **NO FURTHER RESTRICTIONS****NEAREST COASTGUARD STATION****PORTOSCUSO**





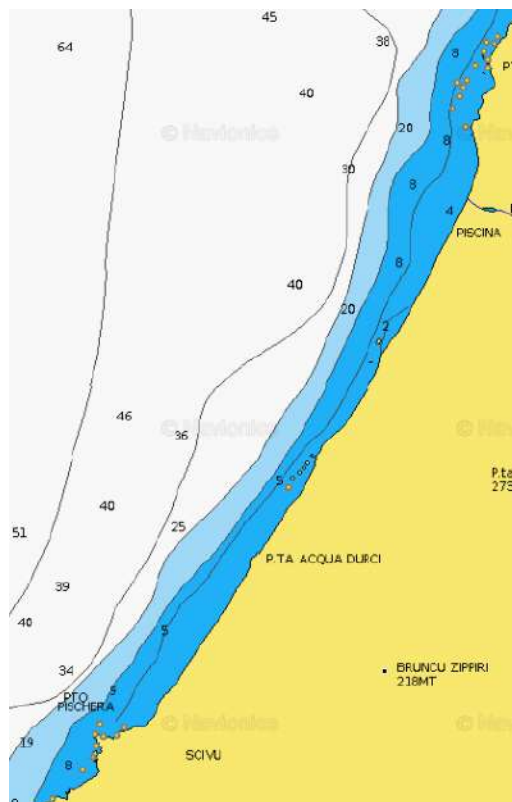
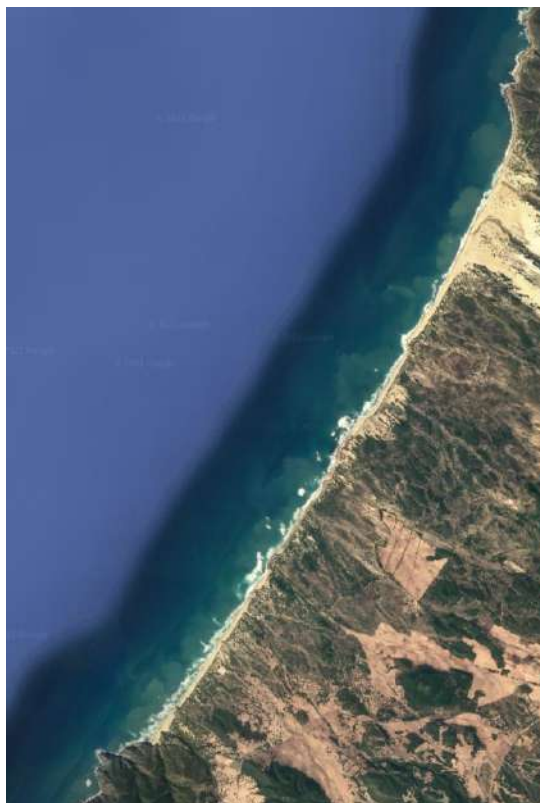
# BUGGERRU AREA

## PISCINAS

An endless and beautiful beach with sandy bottom water, with impressively high dunes, worth a stop for a swim. Unesco World Heritage, among the highest sand dunes in Europe. This anchorage is recommended only with flat calm sea and no wind or very light wind.



 ANCHORAGE NAME	PISCINAS	 SEABOTTOM	SAND
 COORDINATES	39° 32' 44" N 8° 26' 54" E	 FACILITIES TO LAND ASHORE	YES
 HIGHLIGHTS	NATURAL BEAUTY, PISCINAS BEACH DUNES	 FACILITIES ASHORE	BEACH BAR, RESTAURANT , HOTEL
 SHELTERED FROM	E - SE WINDS	 CLOSEST DROP-OFF POINT	BUGGERRU PORT
 LIMITS AND PROHIBITIONS	NO FURTHER RESTRICTIONS	 NEAREST COASTGUARD STATION	PORTOSCUSO







**NAUTICA ASSISTANCE**  
YACHT AGENTS & SUPPLIERS

SARDINIA  
CORSICA  
CARIBBEAN

## ORISTANO AREA



### GENERAL RESTRICTIONS

- Navigation within 200 m from the coast
- Anchoring within 200 m from the coast
- 10 knots speed limit within 1 km from the coast
- Running any craft within 200 m from the coast with engines on
- Tying lines to rocks







# ORISTANO AREA

## THARROS - MARE MORTO

A beautiful anchorage front of the Phoenician ruins of Tharros. An amazing site accessible via land using Marina di Torre Grande in Oristano as a drop off point. You can anchor opposite the ruins by 11 m of water, 0.5 NM Tower San Giovanni dal Sinis. Good holding in sand. The Phoenicians settled in Tharros to 800 BC, then came the turn of the Carthaginians in 500 BC. Port Tharros became a place of passage and a strong center of commercial activity. Its privileged position within the Sinis peninsula, protected from the mistral, the fertility of the land and its mineral wealth were at the origin of its strong growth. City Tharros was finally abandoned when moving structures Oristano. There are important archaeological remains dating from the second century BC. on the Sinis peninsula that closes the Gulf of Oristano.



ANCHORAGE NAME

THARROS - MARE MORTO



SEABOTTOM

SAND



COORDINATES

39°52'44.1"N  
8°26'37.0"E

FACILITIES TO LAND ASHORE

YES



HIGHLIGHTS

NATURAL BEAUTY



FACILITIES ASHORE

BEACH BAR, RESTAURANT



SHELTERED FROM

E - SE WINDS



CLOSEST DROP-OFF POINT

MARINA DI TORRE GRANDE



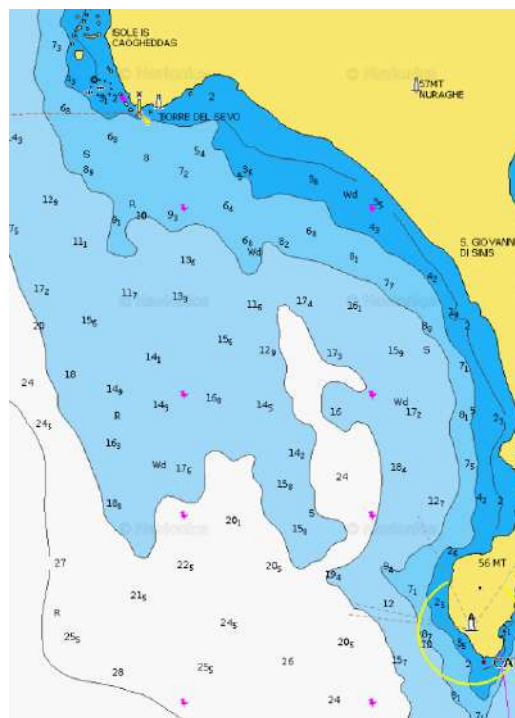
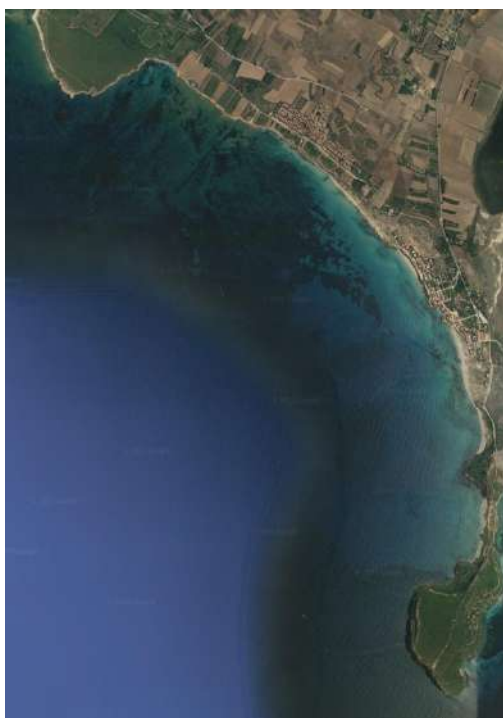
LIMITS AND PROHIBITIONS

NO FURTHER RESTRICTIONS



NEAREST COASTGUARD STATION

ORISTANO







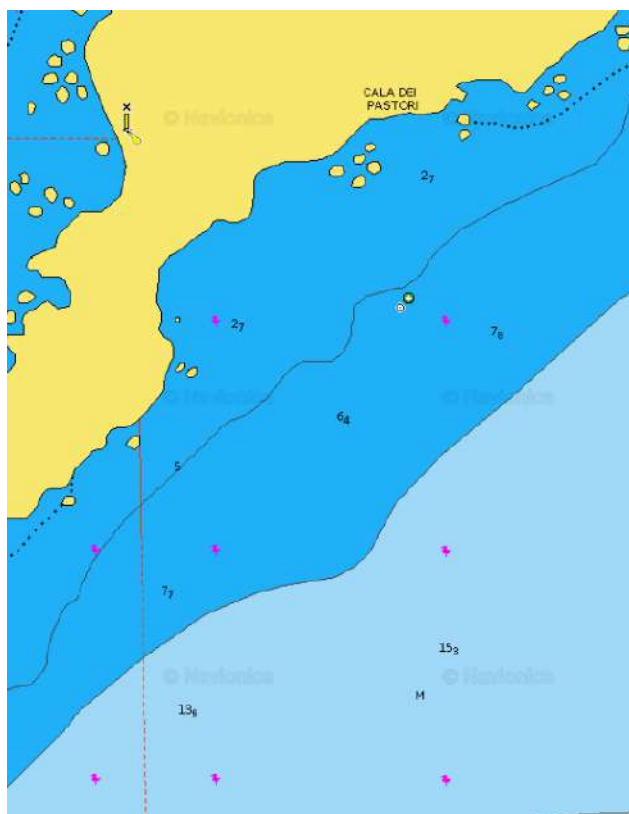
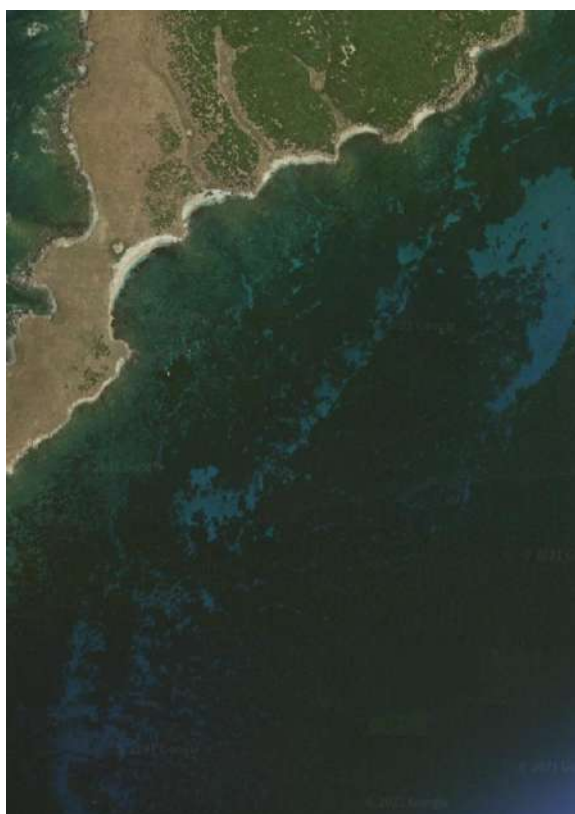
# ORISTANO AREA

## CALA DEI PASTORI - MAL DI VENTRE ISLAND

Located in Penisola del Sinis, in the Marine Protected area of Mal di Ventre you can anchor in the small cove, 250 m from the shore, in 5 m water, SE of the island. Authorization is required to anchor with a tender by the yellow buoys within the protected area. Be careful landing with your tender as the island is the domain of rabbits, birds and gulls are very aggressive! Very protected from the west and northwest winds. Lovely setting for a swim. Perfect location for dive lovers.



 ANCHORAGE NAME	CALA DEI PASTORI - MAL DI VENTRE ISLAND	 SEABOTTOM	SAND AND SEAWEED
 COORDINATES	39° 59' 6" N 8° 18' 27" E	 FACILITIES TO LAND ASHORE	YES
 HIGHLIGHTS	NATURAL BEAUTY	 FACILITIES ASHORE	NONE
 SHELTERED FROM	N - NW WINDS	 CLOSEST DROP-OFF POINT	PUTZU IDU
 LIMITS AND PROHIBITIONS	SEE MAL DI VENTRE ZONING MAP & REGULATIONS	 NEAREST COASTGUARD STATION	ORISTANO







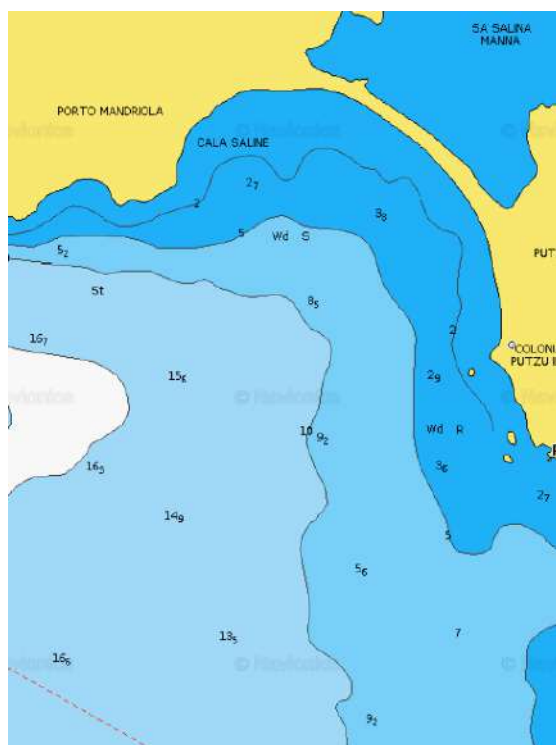
# ORISTANO AREA

## PUTZU IDU

Easy place to anchor especially to the north where there is a small jetty you can take your tender ashore. Good holding and reasonable protection too.. Lots of sandy patches that are easy to see in about 5 m water. Safe against North and North-East. Good stop on the way to Alghero with easy drop off and pick up point. Bottom of sand and seaweed.



 ANCHORAGE NAME	PUTZU IDU	 SEABOTTOM	SAND, ROCKS AND SEAWEED
 COORDINATES	40°01'42.0"N 8°24'03.4"E	 FACILITIES TO LAND ASHORE	NO
 HIGHLIGHTS	NATURAL BEAUTY	 FACILITIES ASHORE	NONE
 SHELTERED FROM	N - NE WINDS	 CLOSEST DROP-OFF POINT	PUTZU IDU
 LIMITS AND PROHIBITIONS	NO FURTHER RESTRICTIONS	 NEAREST COASTGUARD STATION	ORISTANO

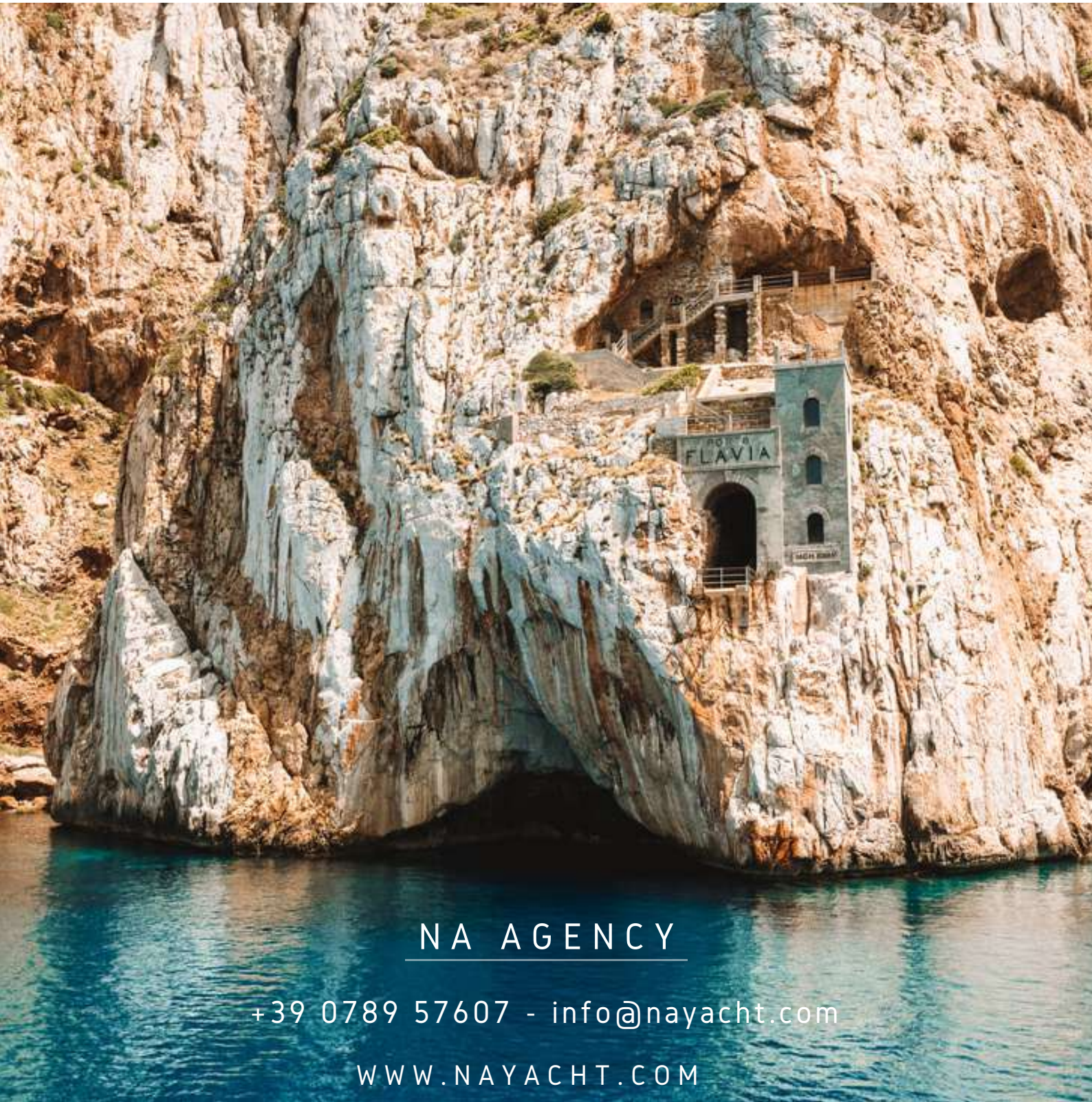






**NAUTICA ASSISTANCE**  
YACHT AGENTS & SUPPLIERS

SARDINIA  
CORSICA  
CARIBBEAN



NA AGENCY

+39 0789 57607 - [info@nayacht.com](mailto:info@nayacht.com)

[WWW.NAYACHT.COM](http://WWW.NAYACHT.COM)



**NAUTICA ASSISTANCE**  
YACHT AGENTS & SUPPLIERS

SARDINIA  
CORSICA  
CARIBBEAN