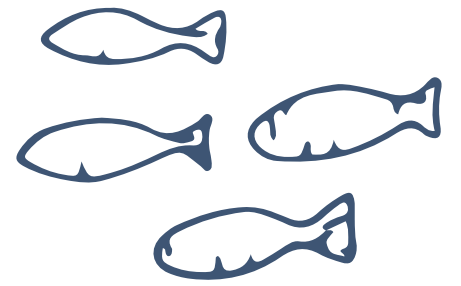




Punta Falcone Marine Protected Area



The Capo Testa – Punta Falcone Marine Protected Area, established by Ministerial Decree 17 May 2018 (GU no. 206 of 5 September 2018) along the northern coast of Saredgna and managed by the Municipality of Santa Teresa Gallura, is a place that reserves unusual emotions .

An area that contains within its vast perimeter of over 5000 hectares, an important territorial variety characterized by marine, coastal, geological, environmental (flora and fauna) and anthropic landscapes representative of the territory of the historical Gallura region.

In addition to fulfilling the general objectives of conservation, the Marine Protected Area aims to play an important role in territorial guidance, activating processes and paths that are able to demonstrate the economic and social value of environmental protection, also and above all in environments with a strong tourist vocation, like the coastal one we are talking about.

The objective is that of continuous monitoring of data regarding the biotic and abiotic components of the ecosystem, but also of continuous interaction with the social actors of the territory, to allow a management response, as flexible and dynamic as possible, capable to respond to strictly environmental needs, but also capable of promoting a growth in awareness of the social context and of encouraging a gradual consensus regarding one's work.

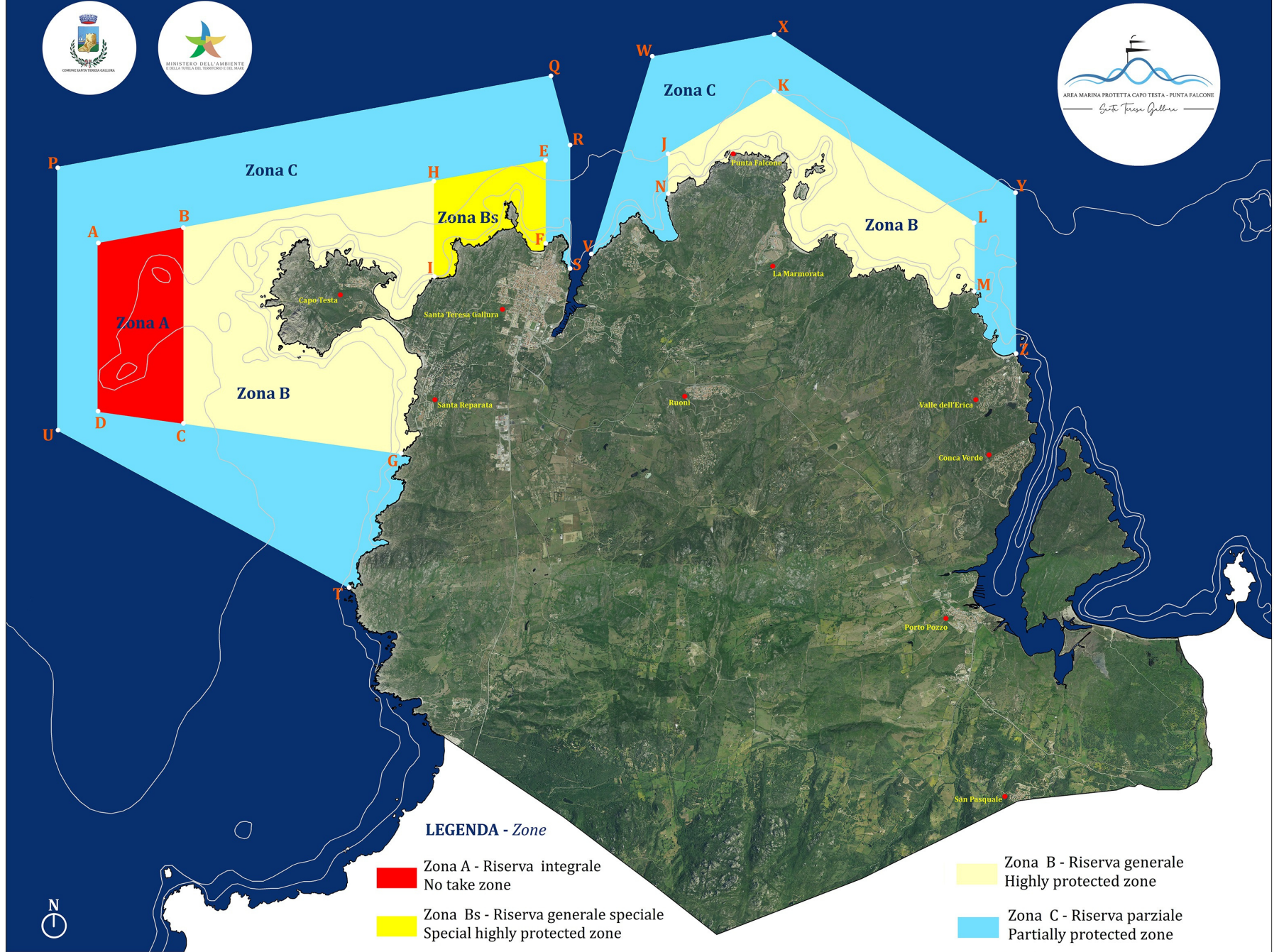
The Marine Protected Area is divided into four zones (A, B, Bs and C): full, general, general, special and partial reserve. Areas that have different access possibilities and limitations in their usability.

The area subjected to protection and conservation measures also includes the Site of Community Interest (SCI) of Capo Testa - ITB010007, designated SAC with Ministerial Decree 7 April 2017, and for which the approved management plan is in force by the Sardinia Region with Decree n. 15798/24 of 16 July 2015, established pursuant to the Community Habitats Directive and included in the system of areas dedicated to the conservation of biodiversity belonging to the Natura 2000 Ecological Network





Carta zonizzazione AREA MARINA PROTETTA CAPO TESTA - PUNTA FALCONE



ZONA A			ZONA B			ZONA Bs			ZONA C		
Punto	Latitudine (°N)	Longitudine (°E)	Punto	Latitudine (°N)	Longitudine (°E)	Punto	Latitudine (°N)	Longitudine (°E)	Punto	Latitudine (°N)	Longitudine (°E)
A	41° 14' 47.25"	009° 06' 25.33"	N (in costa)	41° 15' 11.42"	009° 12' 47.77"	I (in costa)	41° 14' 29.89"	009° 10' 10.75"	T (in costa)	41° 11' 52.27"	009° 09' 13.52"
B	41° 14' 55.22"	009° 07' 22.51"	J	41° 15' 32.25"	009° 12' 47.84"	H	41° 15' 18.62"	009° 10' 10.87"	U	41° 13' 12.45"	009° 05' 57.98"
C	41° 13' 15.91"	009° 07' 22.33"	K	41° 16' 03.75"	009° 13' 59.16"	E	41° 15' 28.98"	009° 11' 25.57"	P	41° 15' 25.96"	009° 05' 58.18"
D	41° 13' 22.00"	009° 06' 25.19"	L	41° 14' 56.89"	009° 16' 13.05"	F (in costa)	41° 14' 45.09"	009° 11' 25.44"	Q	41° 16' 12.01"	009° 11' 29.51"
			M (in costa)	41° 14' 21.74"	009° 16' 12.91"				R	41° 15' 36.62"	009° 11' 42.01"
			G (in costa)	41° 13' 00.25"	009° 09' 48.83"				S (in costa)	41° 14' 33.06"	009° 11' 41.91"
			C	41° 13' 15.91"	009° 07' 22.33"				V (in costa)	41° 14' 39.67"	009° 11' 55.74"
			B	41° 14' 55.22"	009° 07' 22.51"				W	41° 16' 21.36"	009° 12' 37.02"
			H	41° 15' 18.62"	009° 10' 10.87"				X	41° 16' 32.73"	009° 13' 59.26"
			I (in costa)	41° 14' 29.89"	009° 10' 10.75"				Y	41° 15' 12.04"	009° 16' 40.92"
									Z (in costa)	41° 13' 49.79"	009° 16' 40.57"

