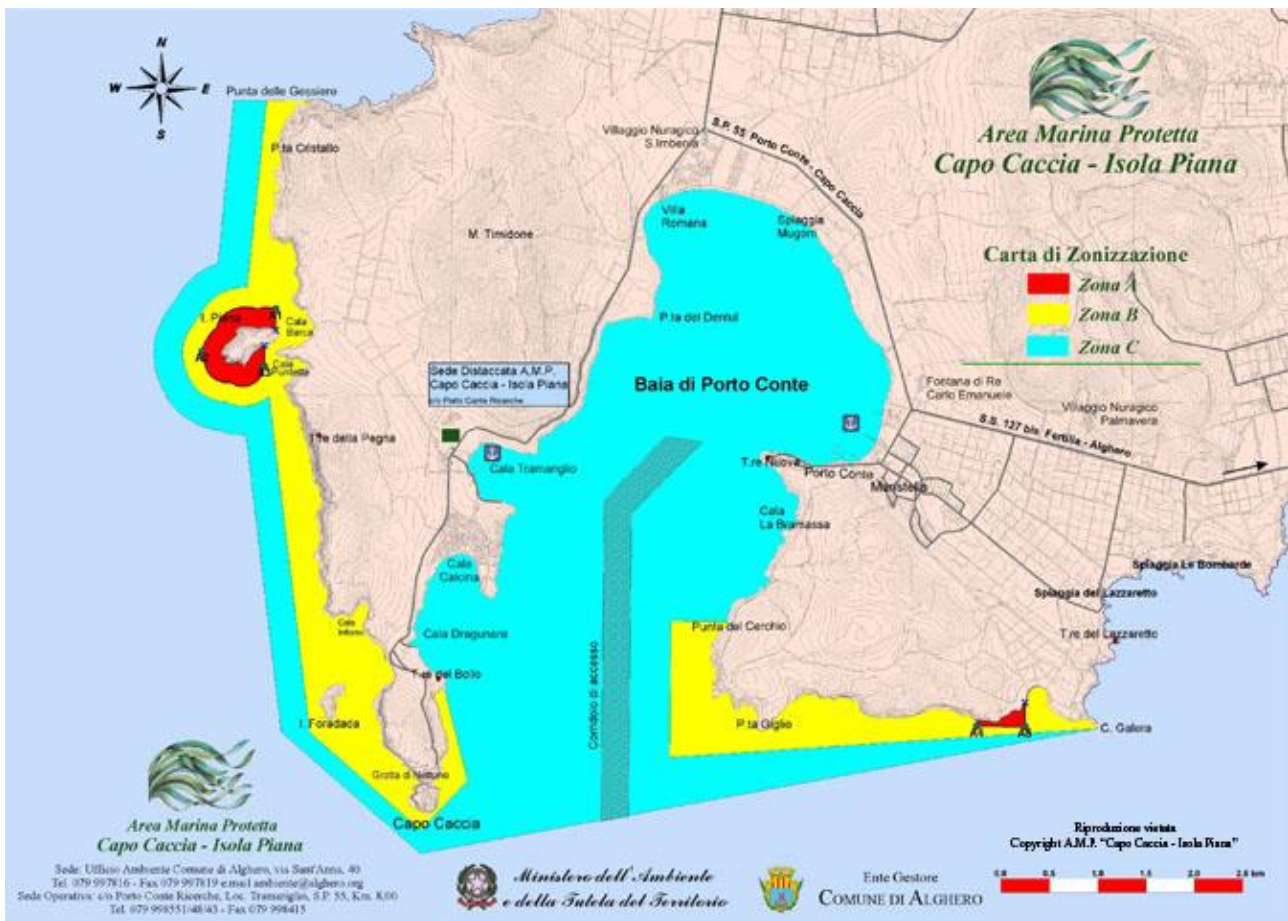


## AMP CAPO CACCIA – ISOLA PIANA – PORTO CONTE BAY RULES & ZONING MAP



### A

There are two areas of integral reserve and include the following stretches of sea:

- the stretch of sea west of the Isola Piana for a distance of 200 m from the coast;
- the stretch of sea at Punta Sant 'Antonio, near Porto Agra.

### B

There are two general reserve areas B and include the following stretches of sea:

- the western part of the Capo Caccia peninsula from Punta delle Gessiere to the Capo Caccia promontory and a portion of the eastern part up to Cala del Bollo;
- the eastern part of Porto Conte between Punta del Cerchio and Punta Giglio, and the cliff of Punta Giglio from the homonymous cape at Capo Galera.

### C

Partial reserve zone C includes most of the bay of Porto Conte and the strip of sea around zone B.

## **Professional Fishing**

Allowed: Small-scale fishing and small-scale fishing, only in zones B and C, with tools and methods illustrated in detail here.

Forbidden: Fishing in zone A.

Fishing with towed gear, with seine, with nets and longlines resulting from purse seine and with the use of light sources.

The taking of some species listed by the Habitats Directive (92/43 / CE to Annexes II, IV, V), such as white and red tuna, swordfish, chestnut fish, groupers, sharks, castanets, limpets , the sea date, the red coral, the cicada, the curly diadem.

The capture, transport, landing and sale of mature lobster females (*Palinurus* spp.) And mature lobster females (*Homarus gammarus*). In case of accidental capture, they must be discarded immediately at sea.

---

## **Sport fishing**

Allowed: Sport and recreational fishing in zones B and C, subject to authorization by the managing body.

Forbidden: Spearfishing with or without the help of self-contained breathing apparatus.

Recreational and sport fishing in zone A.

The fishing of some species listed by the Habitats Directive (92/43 / CE to Annexes II, IV, V), such as white and red tuna, swordfish, chestnut fish, groupers, sharks, castanets, limpets , the sea date, the red coral, the cicada, the curly diadem.

Sport and recreational fishing competitions.

The sale of fish from sport and recreational fishing.

For the period from 1st June to 30th September, fishing with trailed lines is not allowed in the areas identified by the map below.

## **Fishing tourism and fishing**

Allowed: The fishing activity in areas B and C, subject to authorization by the manager, to persons entitled to small-scale fishing / small fishing, with a fishing license.

Forbidden: Fishing tourism activity in zone A.

## **Bathing**

Allowed: Bathing in zones B and C, in compliance with the ordinances of the Autonomous Region of Sardinia and the competent Maritime Authority.

Forbidden: Bathing in zone A.

Bathing inside the mooring fields.

## **Pleasure navigation**

Allowed: Navigation in zones B and C to sailing, rowing, pedal or electric propulsion units, boats, boats, at speeds not exceeding 5 knots (in zone B and in zone C within a distance of 300 meters from the coast), or at 10 knots (in zone C beyond the distance of 300 meters from the coast).

Navigation in zone C is also allowed for pleasure boats, with a tonnage not exceeding 500 T, subject to authorization by the Maritime Authority in agreement with the managing body of the Marine Protected Area with access from the corridor referred to in art. 4, paragraph 11 of the Founding Decree, in order to reach the anchorage point identified and disciplined by the Ordinance of the Alghero Maritime District Office n. 34/2004 and subsequent amendments, exclusively for safety and refuge purposes in case of adverse weather conditions.

This anchor point may also be used for tourism purposes only for pleasure boats not exceeding 50 meters above sea level, subject to authorization by the Maritime Authority in agreement with the managing body of the Marine Protected Area.

Forbidden: Navigation in zone A.

Navigation in zone B to pleasure boats.

The use of jet skis or jet skis and similar means.

Navigation and stopping of merchant and passenger ships of over 500 tons.

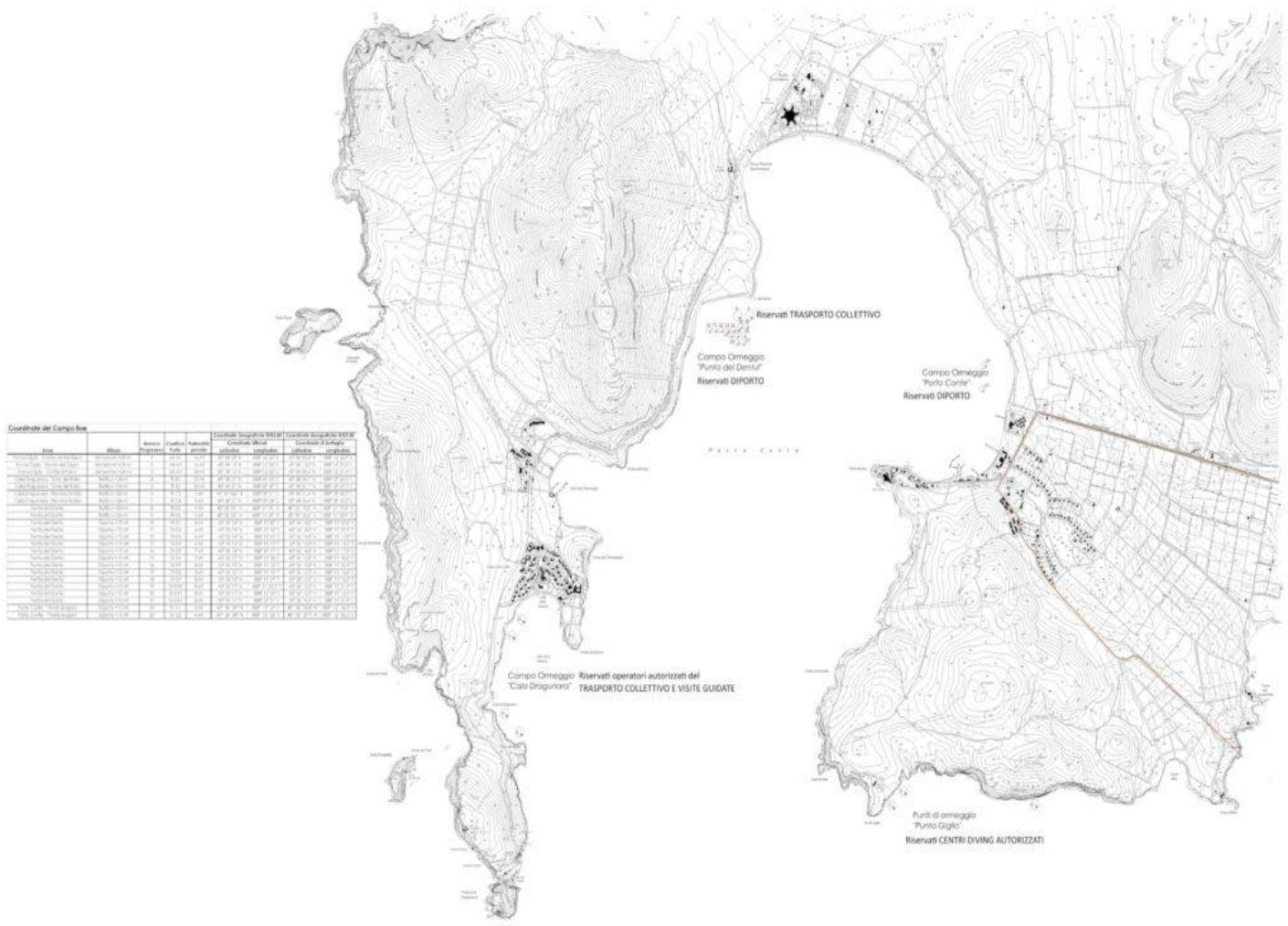
The practice of water skiing and similar water sports.

The improper use of voice diffusion systems and acoustic or sound signals.

## Mooring

Allowed: Mooring in areas B and C to boats and boats, in the sites identified by the managing body and with his authorization.

Mooring in areas B and C to the nautical units used for passenger transport activities, guided tours, underwater guided tours and underwater teaching, to the buoys arranged for the purpose, in the sites identified with subsequent provision by the manager.



Map of the sites identified for mooring.

Forbidden: The mooring in area A.

The mooring of the nautical units in zones B and C to the buoys reserved for scuba diving, guided diving tours and underwater educational activities.

Keep the engine running while parked in the mooring fields.

Bathing and scuba diving in the mooring fields.

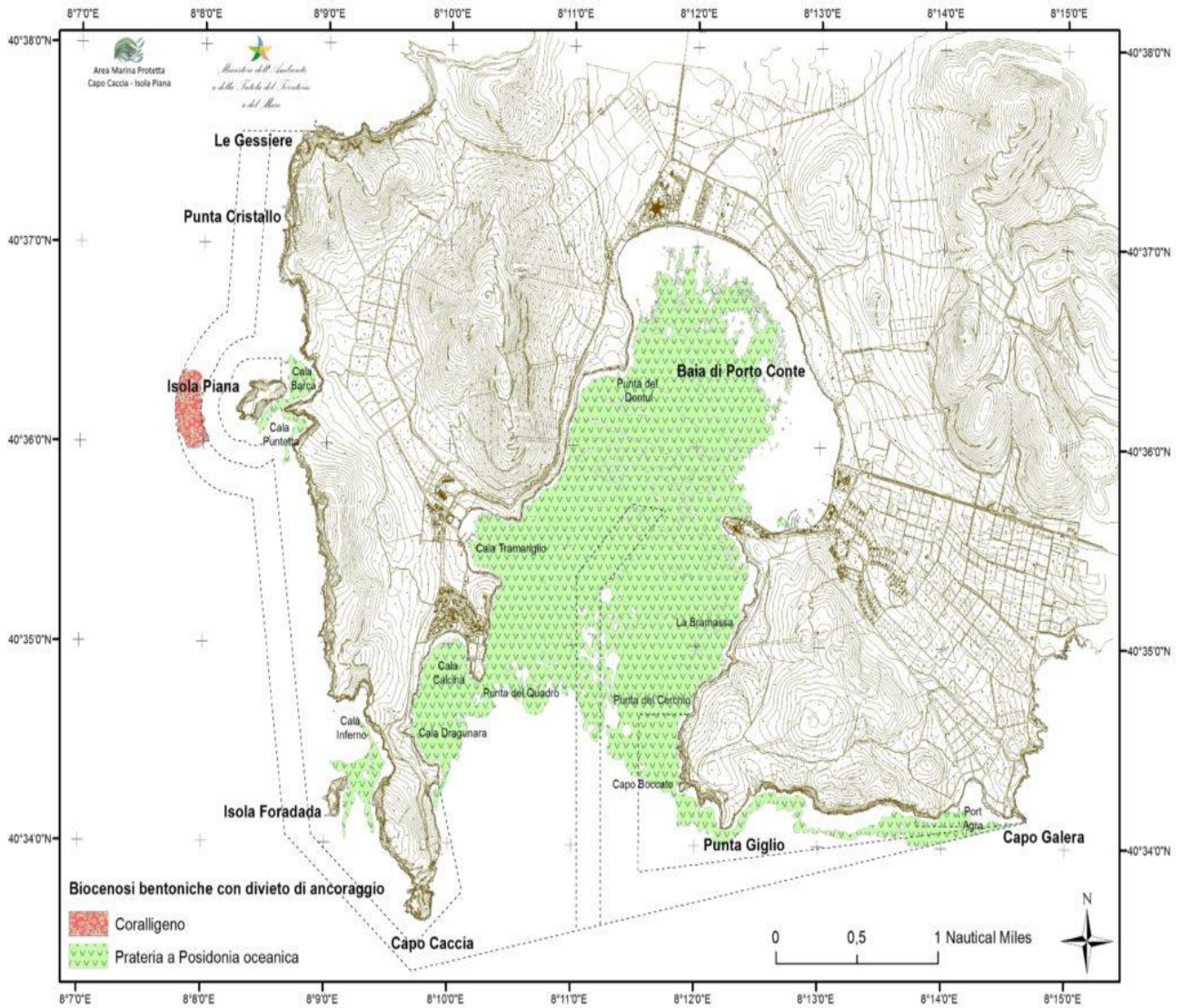
## **Anchoring**

"Anchoring" means the set of operations to ensure the tightness of the nautical units to the seabed, carried out exclusively by anchoring the anchor.

Allowed: The anchoring of boats and pleasure boats in zones B and C exclusively on sandy bottoms and in sites with rocky bottoms identified by the operator.

Forbidden: Anchoring in zone A.

Anchoring in zones B and C in the seabed with *Posidonia oceanica* or coralligenous grasslands, or inside and in the vicinity of the areas used as a mooring field.



## Individual dives

Allowed: Individual freediving dives in zones B and C, authorized by the managing body, according to the procedures set out in the implementing regulations.

Individual dives with self-contained breathing apparatus in zone B and C, authorized by the managing body, according to the procedures set out in the implementing regulations.

Forbidden: Individual dives in apnea or with self-contained breathing apparatus in zone A, inside the sea caves and at night (from sunset to sunrise).

Diving alone, without the aid of first aid persons.

Damage the marine environment.